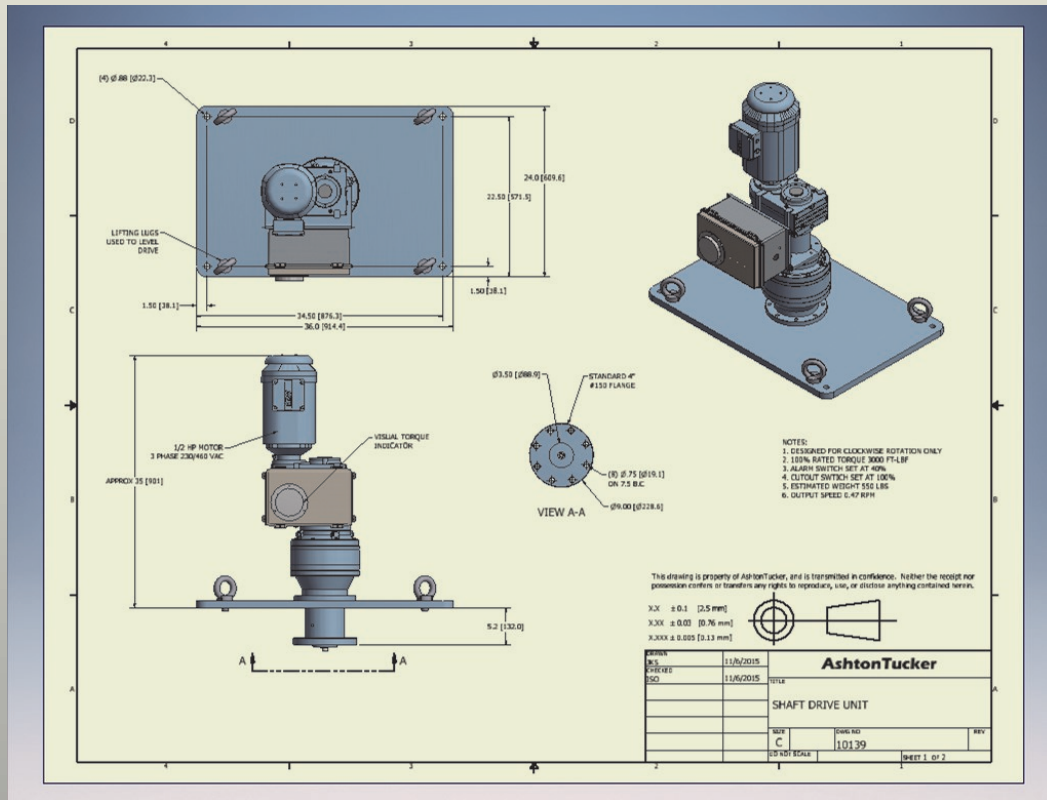


Bridge Mounted Drive Unit



Used on clarifiers and thickeners where the bridge spans the entire tank.

AshtonTucker Model 10139 Specifications

Rated for 20 years at 3000 ft-lbf Continuous Torque and 6000 ft-lbs Momentary Peak

Primary Helical Gear Reducer and Planetary Final Speed Reduction

Rotates clockwise with final output speed of 0.47 RPM

1/2 HP Gearmotor for 3 Phase, 60 Hz, 230/460 VAC Power

Weather Resistant Torque Control System

NEMA 4x Alarm Switch set at 40% and Cutout Switch set at 100%

Visual Torque Indication

AshTuck.com

Info@AshTuck.com

801 290 5757